

CTS-800

Palm-size veterinary ultrasound

Compact design & easy operation

Water proof for outdoor operation

Gravity sensor for layout change

Livestock pregnancy detection

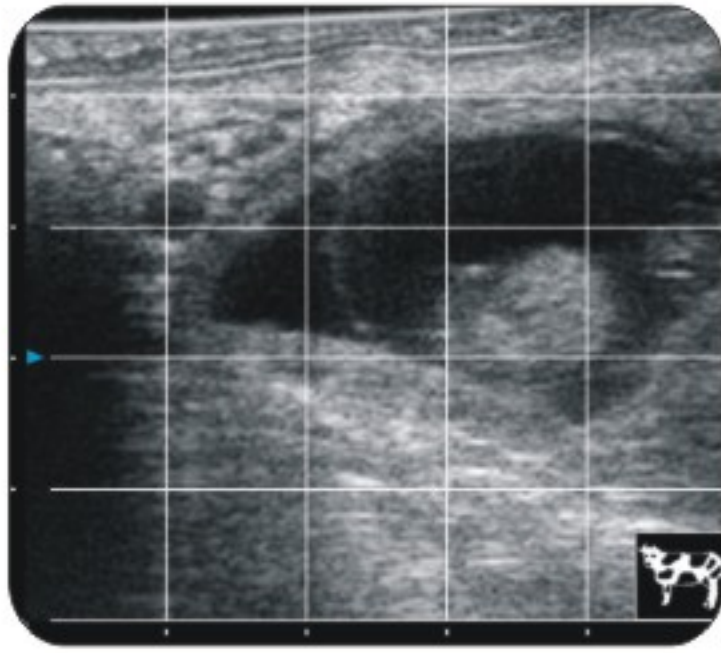


See the future
SIUI



CTS-800

Palm-size veterinary ultrasound



Grid for Estimation



Different Layout

Specifications:

- Monitor: 7-inch WVGA LCD monitor
- Weight: 0.8 kg
- Environmental rating: IP54 (main unit) IP67 (probe head)
- Battery: 3 hours operating time
- Display mode: B, 2B, ZOOM B, B/M, M
- Depth: Max to 250mm
- B gain: 0~100
- Image storage: 256 frames
- Cine loop: 256 frames
- Image Layout: Gravity sensor for layout change (transverse/vertical)
- Measurement: Distance, area, circumference, volume, angle, heart rate
- Probe: L50/7.5 MHz linear rectal probe (Standard)
L65/5.0 MHz linear rectal probe (Optional)
R20/5.0 MHz micro convex probe (Optional)

Main features:

Compact Design

Only with a belt, you can free the ultrasound system from a still trolley or table. Tie the ultrasound system into your body and operate it at any position as you like.

Gravity Sensor

You can operate the ultrasound system either in transversal layout or vertical layout. It can automatically adapt to two different layouts when you rotate it.

Grid for estimation

With grid on the image area, you can easily estimate the size of the target substance like follicle, fertilized egg, etc.



SIUI

Shantou Institute of Ultrasonic Instruments Co., Ltd.

Enterprise Ultrasound
Lake Forest, California USA
www.enterpriseultrasound.com
sales@enterpriseultrasound.com
PH: 1-949-400-7868

 **ENTERPRISE**
ULTRASOUND

Specifications and appearance are subject to change without prior notice.

DCY2.782.EN.CTS-800.CY/7802