

GE Healthcare

# Ultra sound future.

Voluson E8 ultrasound system



Our history of breakthroughs continues with a powerful new platform that takes image quality to greater heights and paves the way for the future.

## Technology for new generations.

Every generation represents new hope for the future – even the next-generation of an ultrasound imaging platform.

Introducing the **advanced technology imaging platform** of the **Voluson® E8**, a premier women's healthcare system that delivers a new generation of image quality using ground-breaking diagnostic tools for earlier diagnoses. And opens the door for imaging innovations to come.

A revolutionary new **4D transvaginal probe** helps you see and detect fetal abnormalities earlier than ever, and significantly improves diagnostic confidence in complex GYN exams.

New **matrix array volume probes** establish a whole new category of image clarity for volume imaging. With increased

spatial resolution that provides better visualization for 2D and multiplanar imaging.

And the new, automated imaging tool, **VCAD (Volume Computer Aided Diagnosis)**, improves workflow by making it easier to acquire volume images of the fetal heart.

GE's past is well-known. We have a track record of ultrasound firsts. We are the recognized leader in women's healthcare.

Now, with the Voluson E8 and its new platform for the future, the possibilities are endless.





# Make yourself comfortable. And more productive.

In designing the Voluson E8, our inspiration was you.

More specifically, how we could make ultrasound exams easier, faster and more comfortable for you.

We began by developing automated tools to address the need for standardization, reduced scanning times, improved reproducibility and a shortened learning curve.

Our new **VCAD** tool makes a difficult exam much easier by streamlining the acquisition of volumetric images of the fetal heart. This proprietary technology displays all the 2D planes, which complies with the recommended standard screening exam of the fetal heart, as outlined by AIUM, ACOG, ACR and ISOUG. This process includes identification of the 4-chamber, left outflow tract and right outflow tract view of the fetal heart.

Even post-processing and archiving is simplified with a new Clipboard feature that allows you to quickly access saved images from a study and virtually rescan them using GE's exclusive TruScan™ architecture.

Then we turned our attention to the physical characteristics of the system.

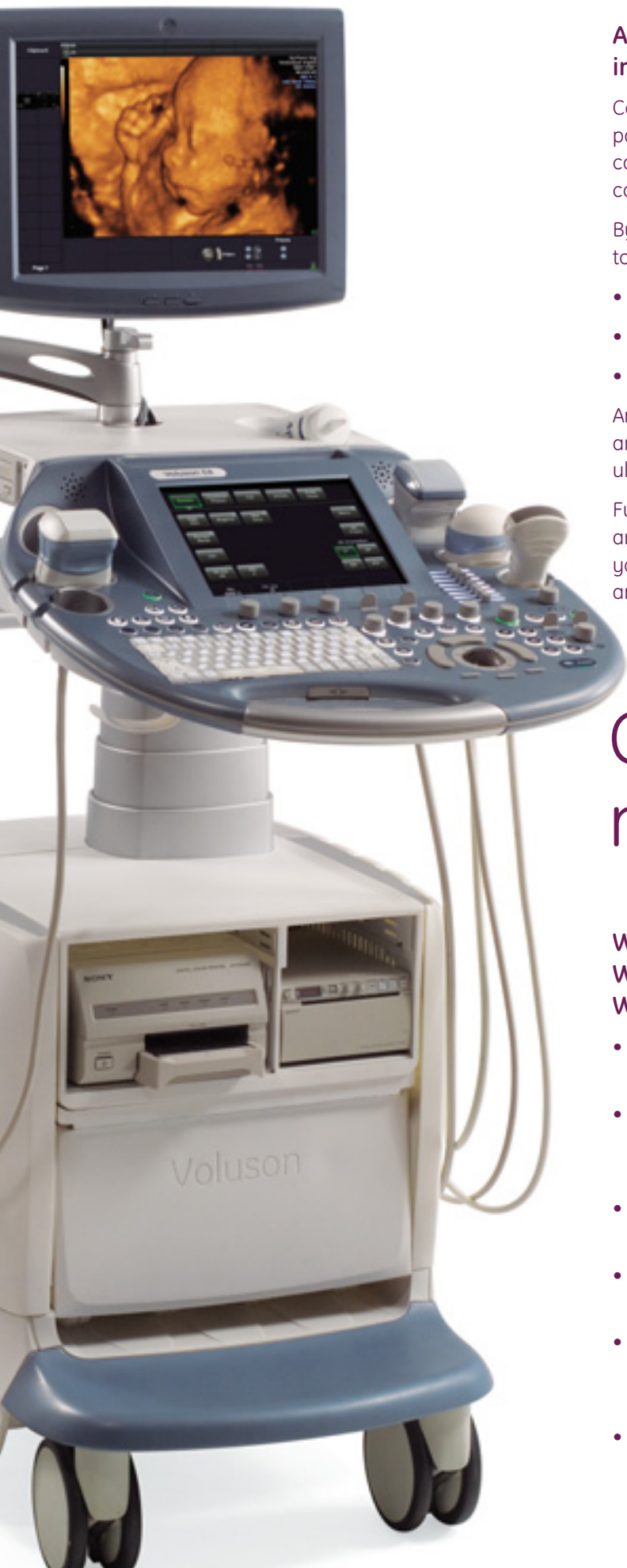
By applying GE's SonoErgonomics™, we developed an ergonomic solution that addresses every aspect of your comfort – and follows all the Society of Diagnostic Medical Sonography's (SDMS) study recommendations.

For starters, the Voluson E8 is smaller and lighter so it's easier to transport and requires less force to move. In fact, all it takes is one finger to position.

The height of the control panel can be adjusted electrically to each user's individual preference. This unique feature allows each clinician to achieve an ergonomically-correct neutral position. What's more, the console can be positioned to enhance workflow with less reaching and fewer keystrokes.

Our high-resolution flat panel display is independent of the main console, moving on an articulating arm that glides into place. With its wide degree of tilt angles, your neck can stay in a neutral position.

**Simplified studies. Controls within reach.  
Everything made easier.**



## Accomplish more with a robust interoffice information system.

Combine the Voluson E8 with ViewPoint, a powerful OB/GYN patient data management solution, to extend your clinical capability, streamline workflow and increase your diagnostic confidence.

By sending your ultrasound data from the Voluson E8 system to the ViewPoint ultrasound workstation you can:

- Generate comprehensive structured reports
- Access robust databases to document findings
- Archive images, volumes and reports

And by adding 4D View software, you can optimize, manipulate and analyze volume ultrasound data offline – freeing your ultrasound system to image more patients.

Full DICOM connectivity allows you to interface with PACS and other image management systems. This capability gives you additional options for image archiving, patient scheduling and reporting.

## Connect with a network of support.

**When you partner with GE, help is never far. We deliver more than superior ultrasound images. We uphold a vision of clear support:**

- Membership in a global network of Voluson users. Learn, network and share by visiting [www.volusonclub.net](http://www.volusonclub.net)
- 24/7 assistance by an in-house team of ultrasound specialists, plus remote applications support from GE's OnLine Center.
- In-depth, hands-on training at the GE Healthcare Institute, as well as onsite applications training and self-guided tutorials.
- Clinical research, studies and articles that support the clinical efficacy of our volume imaging technologies.
- The GE Continuum, our commitment to annual breakthroughs and a clear upgrade path, to bring future technologies to your Voluson system.
- The financial resources of a world leader for a wide range of financing options.



Transabdominal 3D surface rendering of a 12-week fetus.



4D surface rendering demonstrating detail on a 26-week fetus.

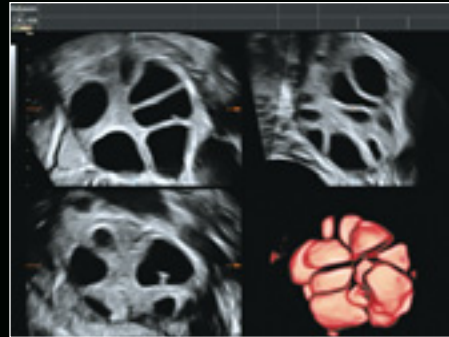


Real-time 4D surface rendering with SRI II on a 32-week fetus.

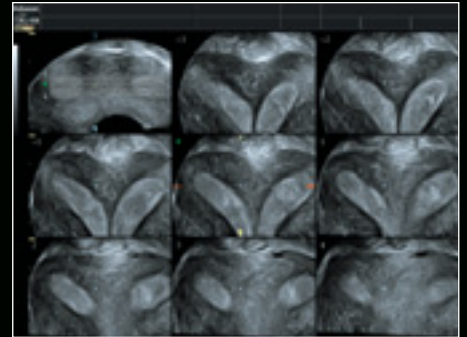
# Let your eyes decide.



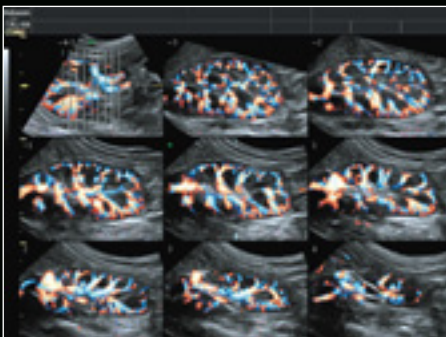
Volume Contrast Imaging (VCI) - C plane image using the bone setting with SRI II.



3D multiplanar image using the new vaginal probe, demonstrating inversion mode rendering of ovarian follicles.



Tomographic Ultrasound Imaging (TUI) image using the new vaginal probe, demonstrating a septate uterus.



TUI with HD-Flow demonstrating renal perfusion.



Circle of Willis using HD-Flow in an early fetus.



The new vaginal probe using HD-Zoom and SRI II, demonstrates exquisite detail of the choroid plexus in a 12-week fetus.

© 2006 General Electric Company – All rights reserved.  
GE Healthcare, a division of General Electric Company.

General Electric Company reserves the right to make changes in specifications and features shown herein, or discontinue the product described at any time without notice or obligation. Contact your GE representative for the most current information.

GE, GE Monogram, Voluson®, TruScan™ and SonoErgonomics™ are trademarks of General Electric Company.



[www.enterpriseultrasound.com](http://www.enterpriseultrasound.com)  
[sales@enterpriseultrasound.com](mailto:sales@enterpriseultrasound.com)

## Healthcare Re-imagined

GE is dedicated to helping you transform healthcare delivery by driving critical breakthroughs in biology and technology. Our expertise in medical imaging and information technologies, medical diagnostics, patient monitoring systems, drug discovery, and biopharmaceutical manufacturing technologies is enabling healthcare professionals around the world to discover new ways to predict, diagnose and treat disease earlier. We call this model of care “Early Health.” The goal: to help clinicians detect disease earlier, access more information and intervene earlier with more targeted treatments, so they can help their patients live their lives to the fullest.

Re-think, Re-discover, Re-invent, Re-imagine.

GE Healthcare  
9900 Innovation Drive  
Wauwatosa, WI 53226  
U.S.A.

[www.gehealthcare.com](http://www.gehealthcare.com)



imagination at work